



# Strategic Advisory Council The JDC Knowledge Agenda

Thursday, September 1st, 2022

Domenico Tabasso, Senior Economist, Joint Data Center on Forced Displacement



Joint Data Center  
on Forced Displacement



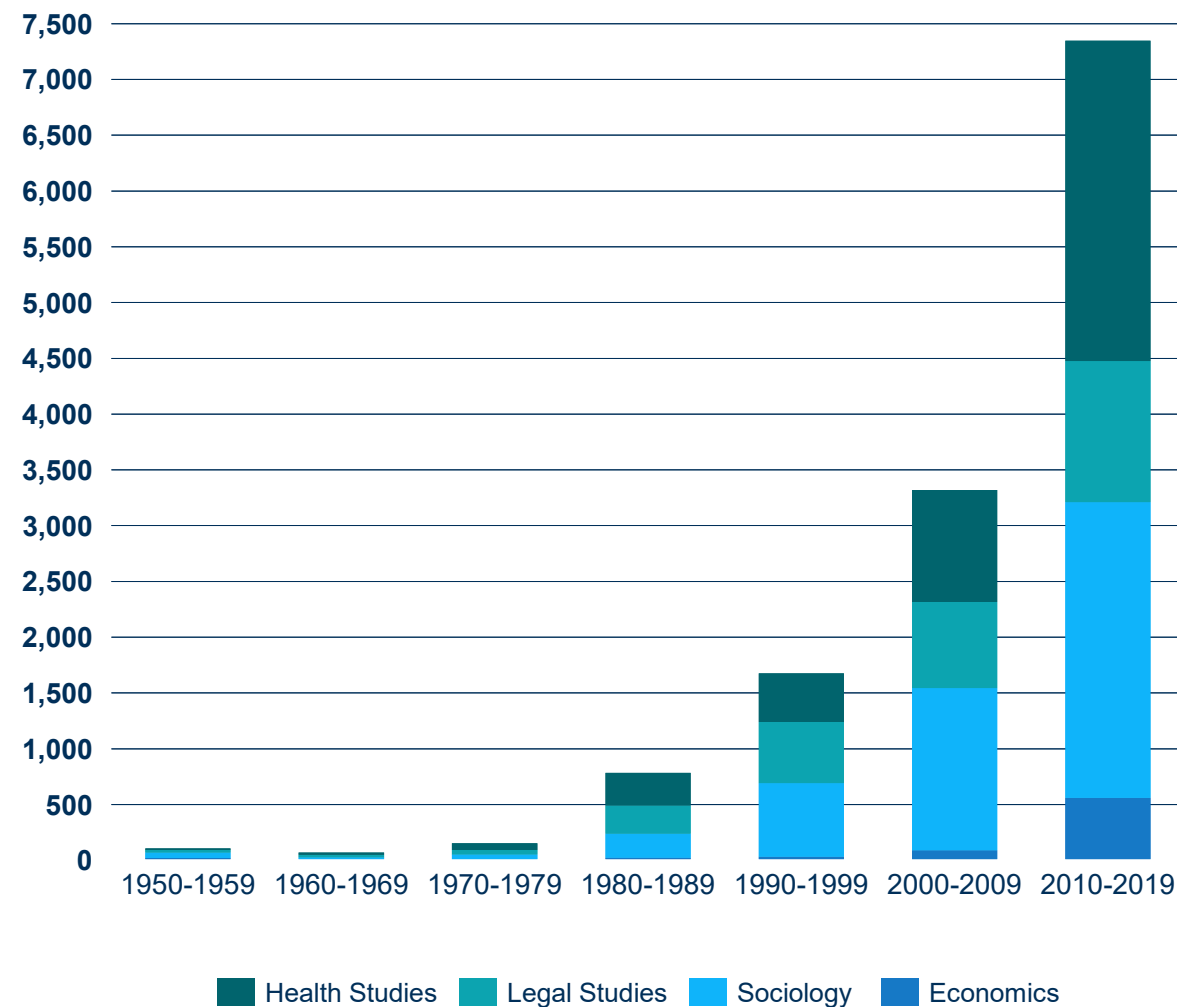
WORLD BANK GROUP



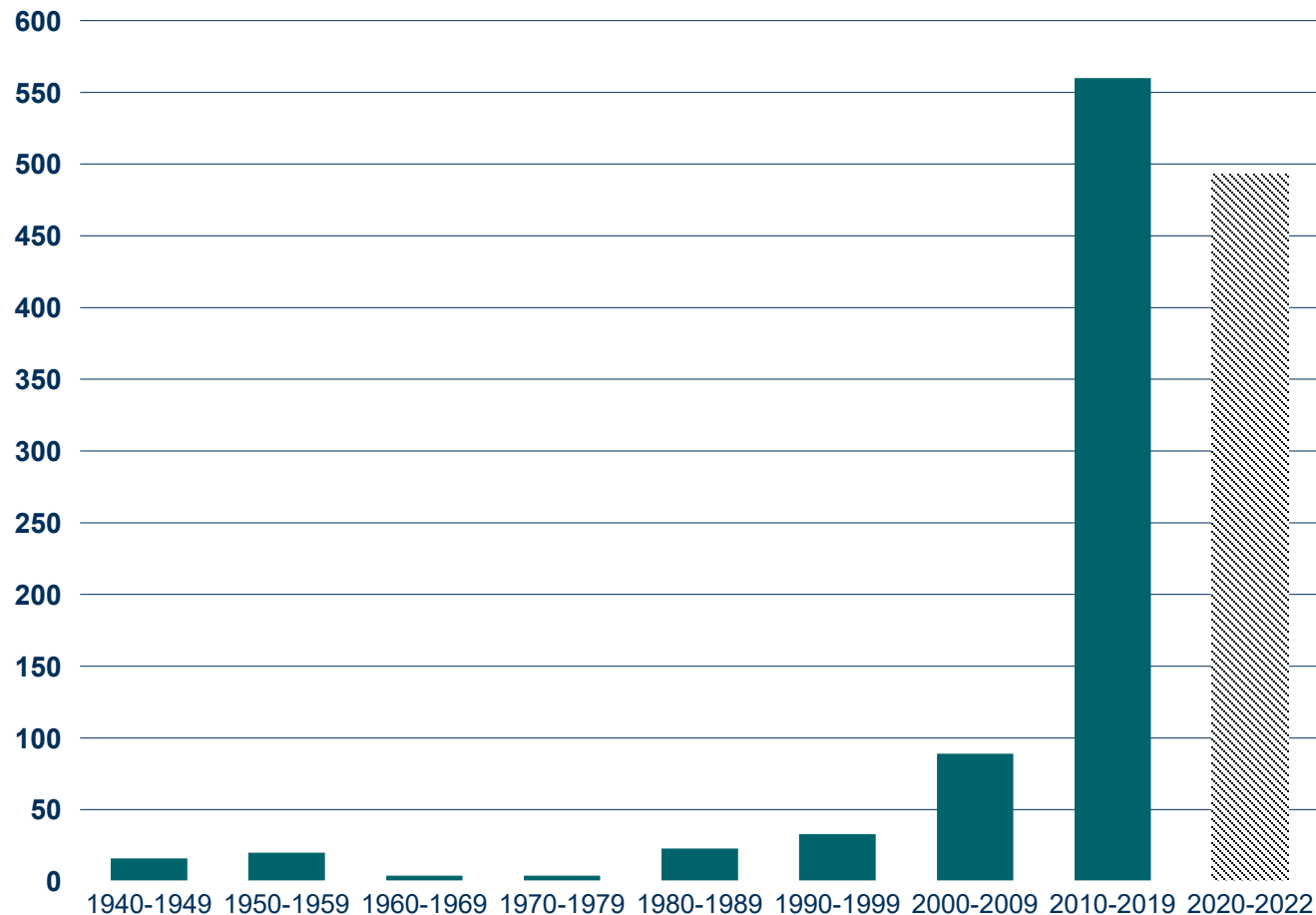
**UNHCR**  
The UN Refugee Agency

The amount of **research on displacement** has exploded in recent years across several fields of study...

ARTICLES ON DISPLACEMENT ACROSS SELECTED FIELDS OF STUDY



## ARTICLES ON DISPLACEMENT IN ECONOMICS

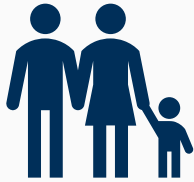


**Research articles  
on displacement  
in economics  
have increased  
after 2010...**

# YET, TWO QUESTIONS ARISE...

1

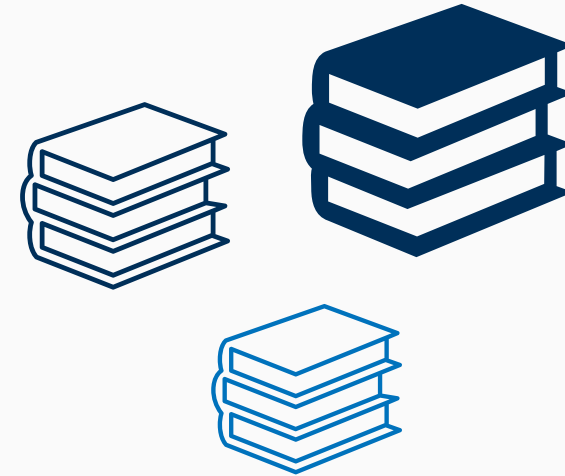
Evidence gaps persist, especially for certain populations (stateless people, children on the move), themes (welfare of returnees), and geographical areas (Sahel, Sudan and South Sudan)



→ How can we fill these gaps?

2

Research is often confined to academia



→ How can we make research operationally relevant?

# JDC's KNOWLEDGE AGENDA: COMPONENTS



# THE KNOWLEDGE AGENDA AND THE JDC STRATEGY

The Knowledge Agenda contributes to the achievement of least three objectives described in the JDC Strategy

Key Objective	Pillars
 <p>Filling the <i>coverage gap</i> and the <i>substantive gap</i>, or lack of data or analysis on key population groups, geographic areas, socioeconomic welfare, or time dimensions</p>	<ul style="list-style-type: none"><li> <u>Mapping exercises</u></li><li> <u>The marketplace</u></li><li> <u>The knowledge papers</u></li></ul>
 <p>Reinforcing the <i>convening role</i> of the Center</p>	<ul style="list-style-type: none"><li> <u>The marketplace</u></li><li> <u>The knowledge papers</u></li><li> <u>The training activities</u></li></ul>
 <p>Forging <i>new partnerships</i></p> <p>All Knowledge Agenda pillars envision collaborations and will facilitate the creation of new partnership outside the Center</p>	<ul style="list-style-type: none"><li> <u>Mapping exercises</u></li><li> <u>The marketplace</u></li><li> <u>The knowledge papers</u></li><li> <u>The training activities</u></li></ul>



# DATA AND EVIDENCE MAPPING EXERCISES

## Data Mapping

A web-based user interface on country-specific socioeconomic microdata on forcibly displaced populations

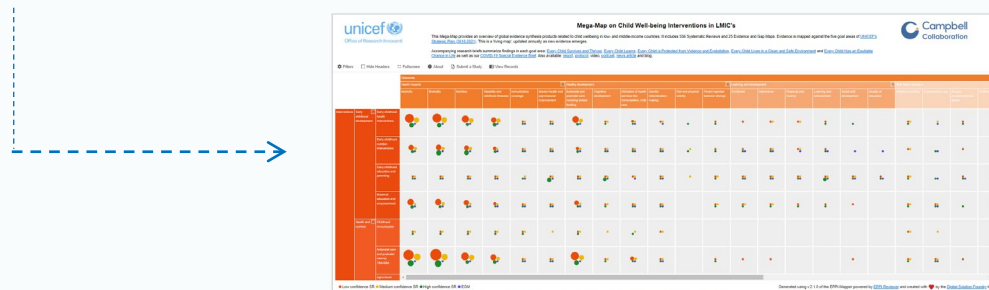


## Evidence Mapping

A multidimensional array of high-quality experimental or quasi-experimental impact evaluations or systematic reviews/meta-analyses



An interesting example: Mega-Map on Child Well-being Interventions in LMIC's



Starting points:  
UNHCR & World Bank MDLs,  
UNHCR & World Bank economist's work



# EXAMPLE OF DATA SCOPING EXERCISE TO BE INCLUDED IN A DATA GAP MAP

## Available datasets in Bangladesh

Extract from a larger scoping file. Courtesy of Mr. Masud Rahman, UNHCR Economist – Bangladesh Office, who collected the information and compiled the file

	A	B	C	D	E	F	G	H	I	J	K	L	M	N
	Sector	Title	Organization (or Authors)	Data Collected on (latest)	Rounds completed	Methodology Notes	Collection Method	Unit	Strata	Geogr. Disaggregation	Type of Info Collected	MDL?	Data URL	Report URL
1	Site Management	Cox's Bazar District - Refugee Camp Structure/ Shelter/ Infrastructure Footprints	UNOSAT/ REACH/ IOM	Apr-21	2	Digitization of previously collected drone footage by IOM	Remote sensing	Facilities	Refugee	Comprehensive mapping	Digitized map of infrastructure	Not applicable/ not shareable	<a href="https://data.humdata.org/dataset/bangladesh-refugee-camp-structure-footprint-march-2020">https://data.humdata.org/dataset/bangladesh-refugee-camp-structure-footprint-march-2020</a>	
2	Energy/ Environment	Energy Monitoring Framework Survey	UNHCR	2020	2	Beneficiary Survey conducted at least twice at Baseline and Endline of the project with the same group of sample beneficiaries.	In person	Household	Refugee	Camp	The scope includes: HH characteristics, cookware and kitchen performance, fuel, and lighting. Topics include: food security, environment, access to	Catalogued	<a href="https://microdata.unhcr.org/index.php/catalog/526/study-description">https://microdata.unhcr.org/index.php/catalog/526/study-description</a>	
3	Livelihood	Livelihoods Programme Monitoring Beneficiary Survey	UNHCR	2020	3	Sampling was conducted by Bangladesh operation. At least 100 randomly selected beneficiaries for each project. A total of 881 surveys for the latest round. Representativeness of sub-groups (gender, camp, etc.) should be kept as much as possible. Baseline and endline beneficiaries should be the same	In person	Household	Refugee and Host	Camp + Union	General information on beneficiary. Access to agriculture production enabled and enhanced. Access to self-employment/ business facilitated. Access to wage employment facilitated.	Catalogued	<a href="https://microdata.unhcr.org/index.php/catalog/539">https://microdata.unhcr.org/index.php/catalog/539</a>	
4	Multi-sectoral	Cox's Bazar Panel Survey (CBPS)	Yale University/ World Bank/ GAGE/ IPA	Aug-19	1	The sample is representative of three strata: i) residents of the refugee camps, ii) host communities within 15km of refugee camps, iii) host communities further than 15km from refugee camps. Samples were selected via a multistage procedure that selected small geographic areas as PSUs, listed each PSU, and then drew households from that listing. A sub-set of the same sample was also administered two additional questionnaires: 1 for an adolescent member in the household (core respondent) and 1 for their adult female caretaker.	In person	Both HH and Ind.	Refugee and Host	Camp + Union	Household: Household Roster, Housing Characteristics, Food Security, Consumption, Assistance, Assets, Anthropometrics. Individual: Labor Market, Labor Market History, Migration History, Use of Health Services, Crime and Conflict, Trauma and Mental Health using the Patient Health Questionnaire 9 (PHQ-9) and Harvard Trauma Questionnaire (HTQ).	Catalogued	<a href="https://dataverse.harvard.edu/dataset.xhtml?persistentId=doi:10.7910/DVN/V614VB">https://dataverse.harvard.edu/dataset.xhtml?persistentId=doi:10.7910/DVN/V614VB</a>	



# A MARKETPLACE FOR RESEARCHERS AND PRACTITIONERS

## Goal

Boost the role of JDC as facilitator of the dialogue between researchers and practitioners



KNOWLEDGE AGENDA  
COMPONENT #2:

Developing a “marketplace”



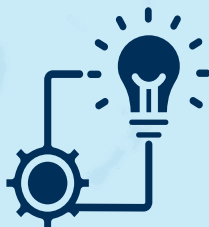
## Solution

A dedicated webpage/portal to offer an interactive space for sharing proposals, ideas for collaborations and possibly more



## Final Objective

The online space will be devoted to matching research opportunities (“the demand”) with research interests (“the supply”)



# KNOWLEDGE DISSEMINATION PAPERS

Provide a framework within which the Joint Data Center can continue conceptualizing and producing its Knowledge dissemination papers



KNOWLEDGE AGENDA  
COMPONENT #3:  
Knowledge dissemination papers



### JDC Paper Series on Forced Displacement

Highly vulnerable yet largely invisible  
Forcibly displaced in the COVID-19-induced recession

“Highly vulnerable yet largely invisible: Forcibly displaced in the COVID-19-induced recession”

ANSWERING THE CALL:  
FORCIBLY DISPLACED DURING THE PANDEMIC

“Answering the Call: Forcibly Displaced During the Pandemic”

### JDC Quarterly Digests

Long-term effects of forced displacement

Education

Children on the move

Gender issues

Attitudes

Housing & Shelter

### New Ideas for Research Products

Existing Products

Potential Future Products

Joint Data Center on Forced Displacement

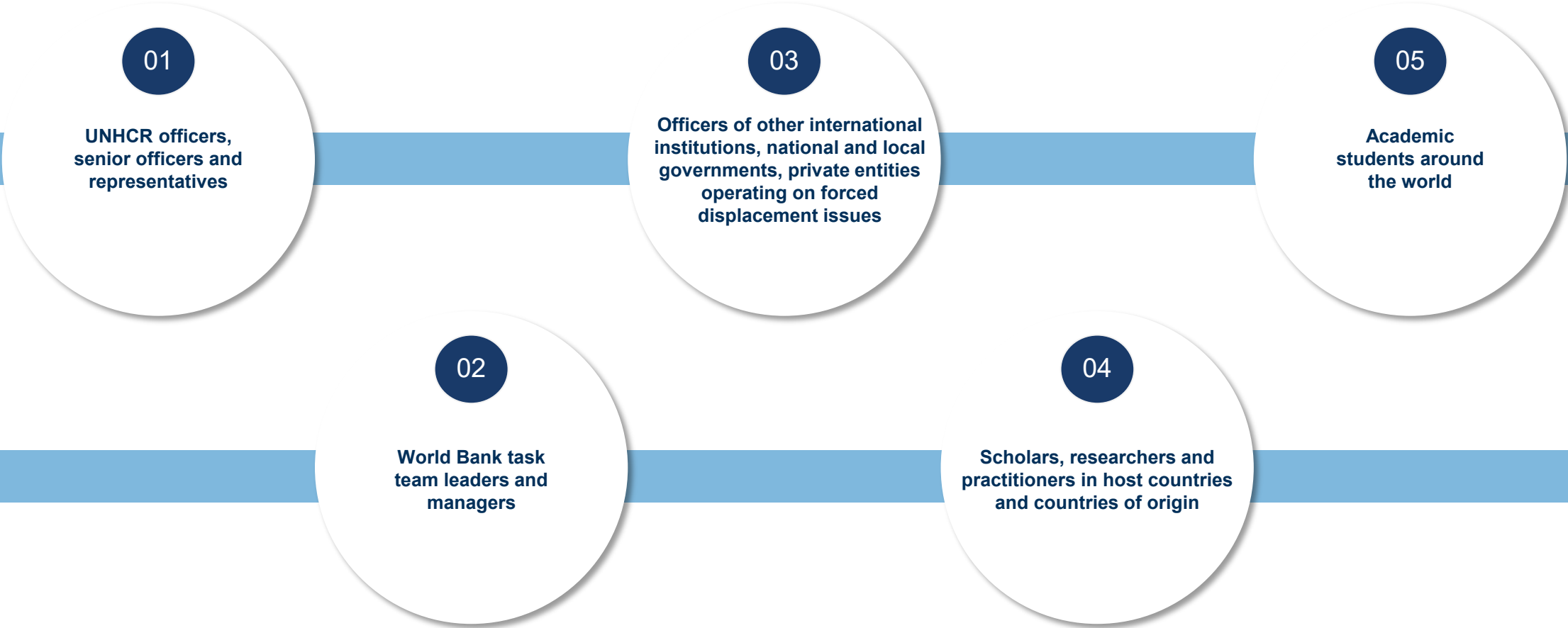
WORLD BANK GROUP UNHCR

Strategic Advisory Council | 2022

# TRAINING OPPORTUNITIES

Data availability, collaborations with researchers and academic institutions can help design training modules, potentially for different audiences:

KNOWLEDGE AGENDA  
COMPONENT #4:  
Developing training modules



# JDC KNOWLEDGE AGENDA – SUMMARY

## Two Main Goals

1

Provide tools for filling data and evidence gaps in forced displacement

2

Strengthen the link between researchers and practitioners, by:

- Making research more operationally relevant, and
- Facilitating working partnerships

## One Global Objective



Boost the design, adoption and use of evidence-based policies and programs





# Strategic Advisory Council The JDC Knowledge Agenda

Thursday, September 1st, 2022

Domenico Tabasso, Senior Economist, Joint Data Center on Forced Displacement



Joint Data Center  
on Forced Displacement



WORLD BANK GROUP



**UNHCR**  
The UN Refugee Agency