

Building the Evidence on Forced Displacement Labor Market Impacts and Jobs Seminar

Good Practices and Lessons-learned from Ecuador
November 2022

Key figures

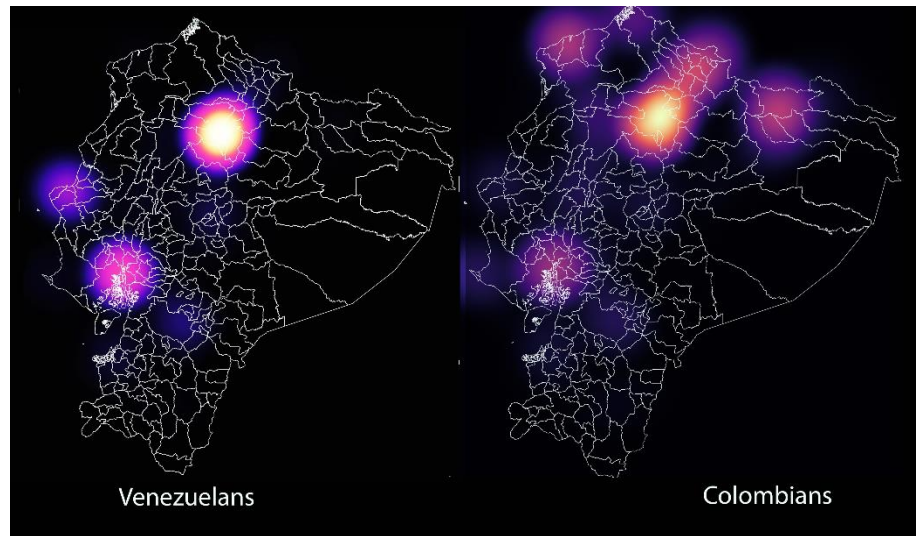
Over **half a million** people of concern:

- The highest historically recognized refugees in the region (**74,263** - 96% from Colombia). 58,862 active cases currently.
- **502.200** refugees and migrants from Venezuela currently living in Ecuador according to the GTRM.

73% of refugees and migrants are in an irregular situation (JNA 2022)

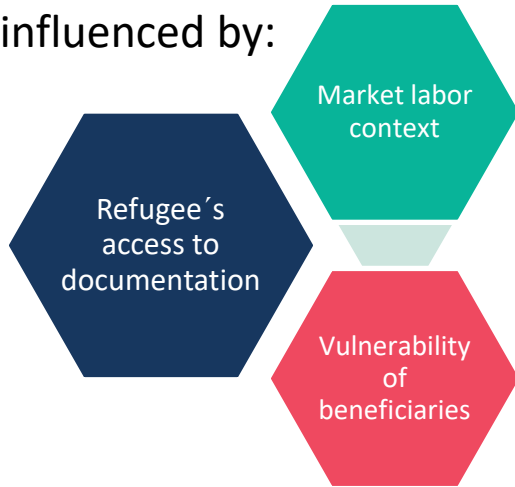
Colombians are mainly located in the provinces of Pichincha, Carchi, Sucumbíos, Esmeraldas

Venezuelans are mainly located in the provinces of Pichincha, Guayas, El Oro, Manabi and Azuay.



Research findings reflected in Ecuador's context

- 1 The choice of job support modalities is influenced by:



- 2 The effectiveness of job support interventions is enhanced by market-based programming.

- 3 Effectiveness of job support initiatives are focused on access to existing jobs and on enjoyment of rights rather than job creation.



Only 3 out of 10 people are adequately employed in Ecuador.

- 4 Cost structure per individual and microbusiness supported is being recorded but a need persists for improving impact analysis and data on the cost of achieving outcomes.

Good practices on jobs support in Ecuador

Advocacy is conducted to enhance the **enabling environment**.

Promote the role of the private sector in the socioeconomic inclusion of refugees.

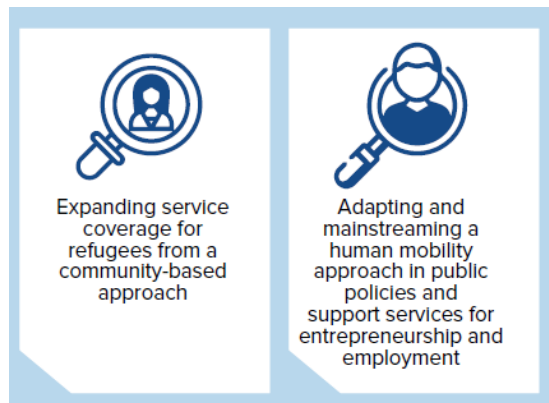


Inclusive Company Seal

<https://www.empresasconlosrefugiados.com>



Public services to support entrepreneurship and employment for refugees



Value Chain Development



Lessons learned from Ecuador

For both, refugees and host communities. Refugees settle in neighborhoods and communities where access to basic services is precarious and opportunities to connect to the labor market are limited. They largely share the exclusion and poverty levels.

INCLUSIVE TARGETING CRITERIA

Identify innovative opportunities in local markets for inclusion of refugees. The effectiveness of job support interventions is enhanced by market-based programming.

MARKET-DRIVEN APPROACH

Partner with and convene expert entities help to scale interventions (reach more population), reduces costs, and diversified portfolio from simple projects interventions to value chain development.

PRIVATE SECTOR PARTNERSHIPS

From the pandemic...

New modalities of job support (digital marketing, connectivity, new demands of the labor market). Access to digital technologies is essential.

DIGITAL INCLUSION

Even if the outcomes are diluted (loss of jobs, decrease of income), investing in strengthening the resilience of the most vulnerable communities and economies catalyze the results of early recovery interventions. Resilience is a key driver of systemic and lasting change.

ECONOMIC VULNERABILITY AND RESILIENCE

Thank you.

La *inclusión*
es mejor negocio

