



MIGRANTS, REFUGEES, ... and ... SOCIETIES

TEAM, CONSULTATIONS, AND ADVISORY PANELS

A multisectoral core team



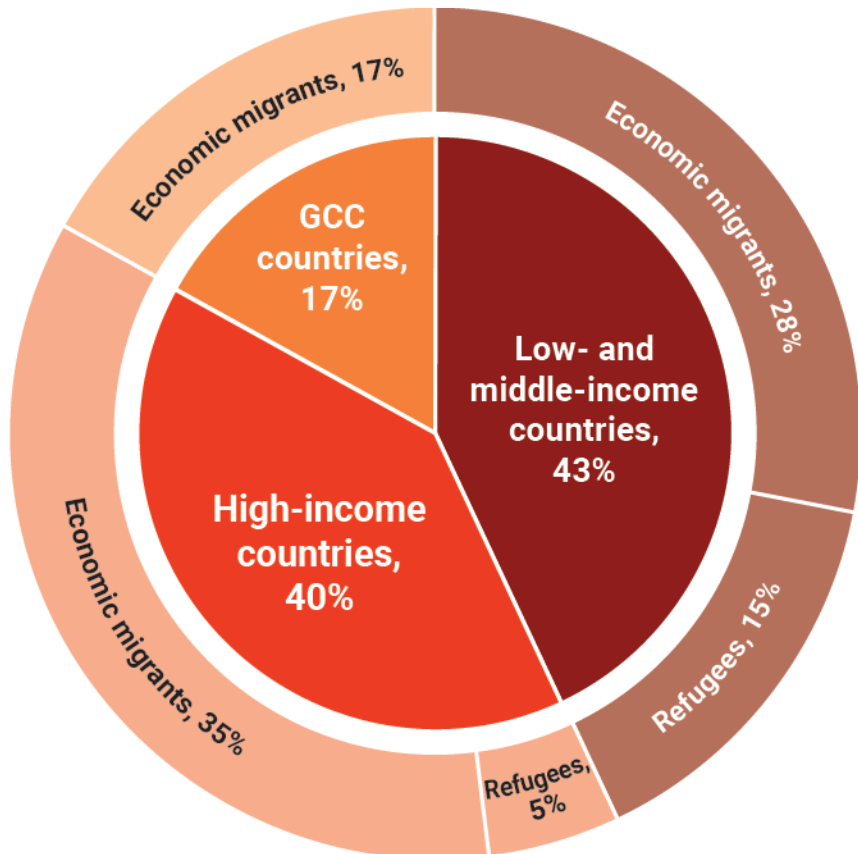
An **academic advisory panel**, with 21 members – economics, social sciences, law – including a Nobel laureate

A **high-level advisory panel**, with ministerial-level members representing all regions, heads of UNHCR, IOM, and ILO, and leading civil society figures

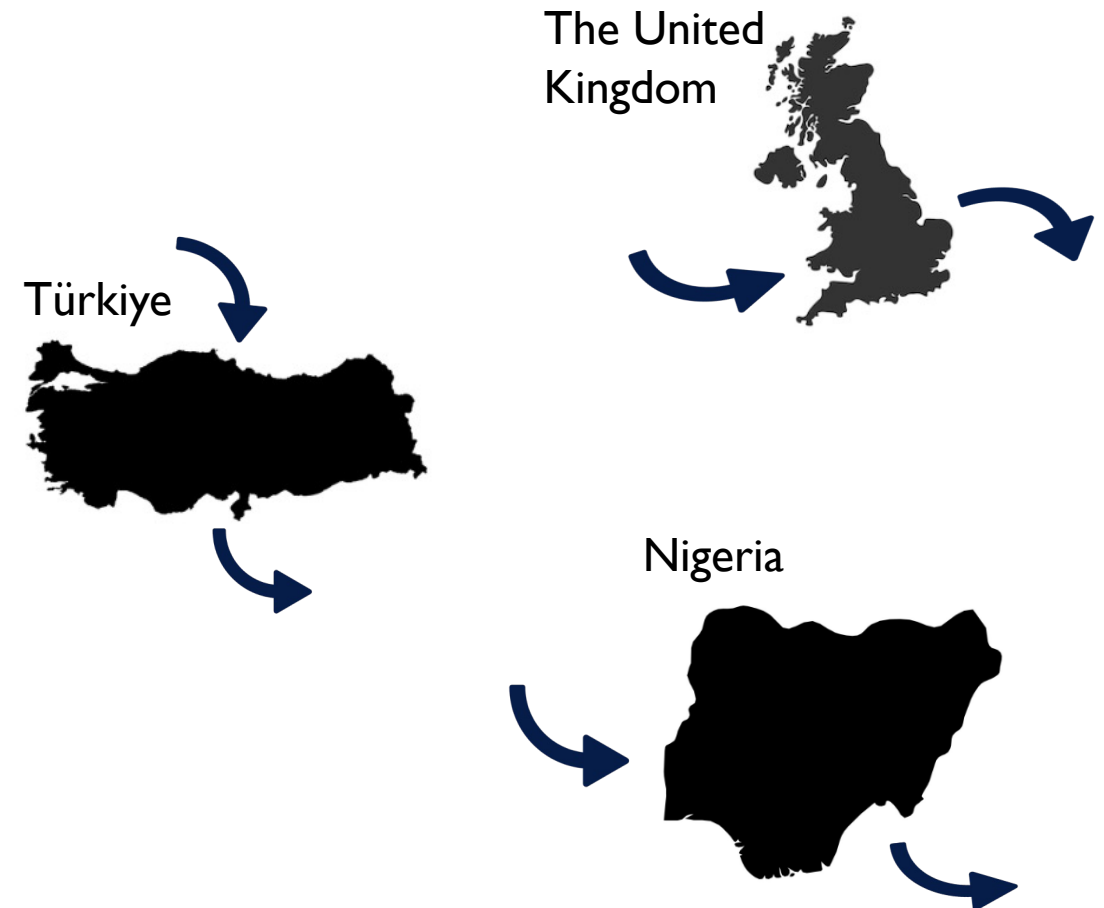
The team has extensively consulted with a series of countries—including origin, destination, and refugee-hosting countries across all regions—and met with policymakers, private sector individuals and executives, and civil society organizations on the ground.

IN A FOREIGN LAND

184 million migrants and refugees
2.3 percent of the world population

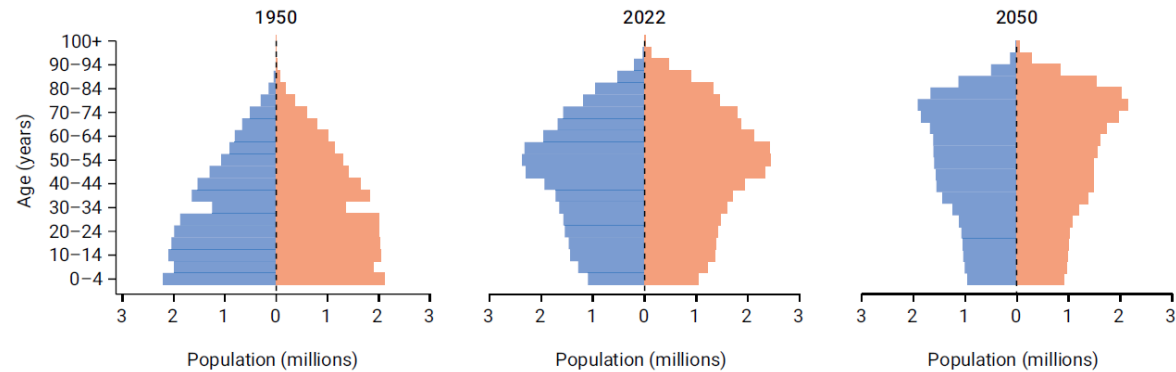


Many countries—at all income levels—are both origin and destination at the same time

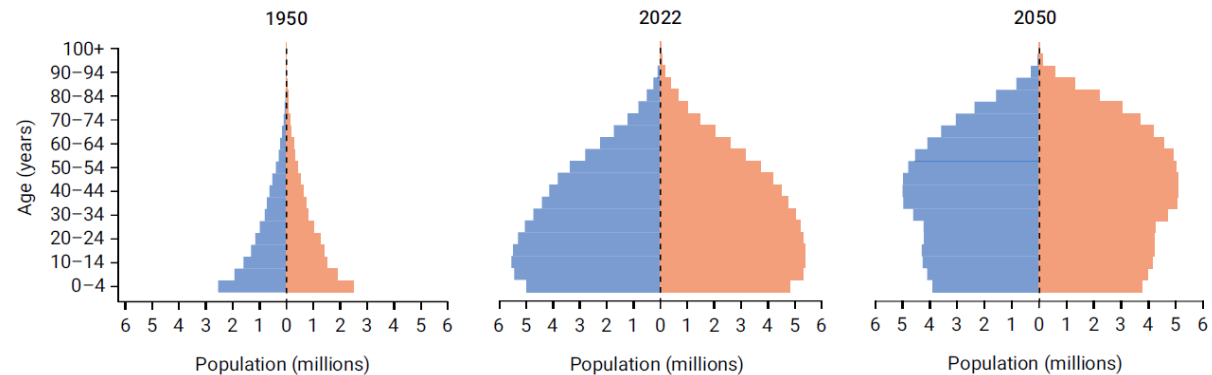


DEMOGRAPHICS: THE COMING COMPETITION FOR WORKERS AND TALENT

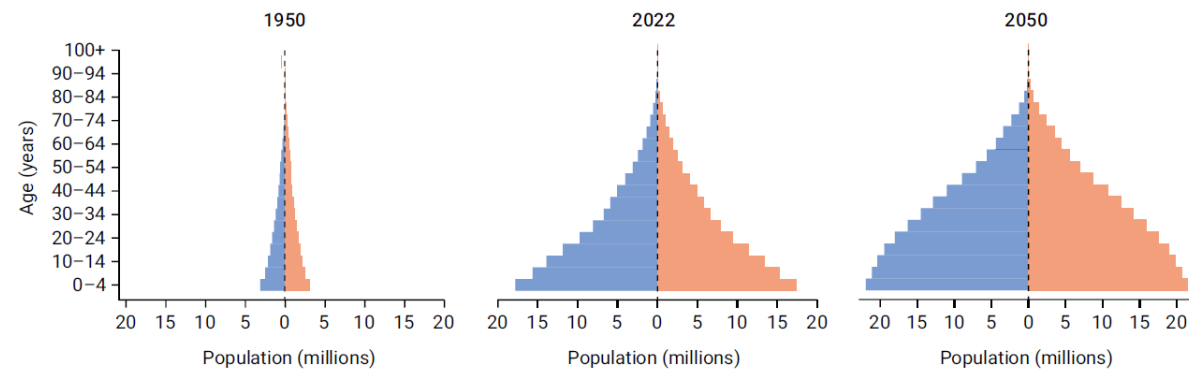
Italy's population is aging and declining



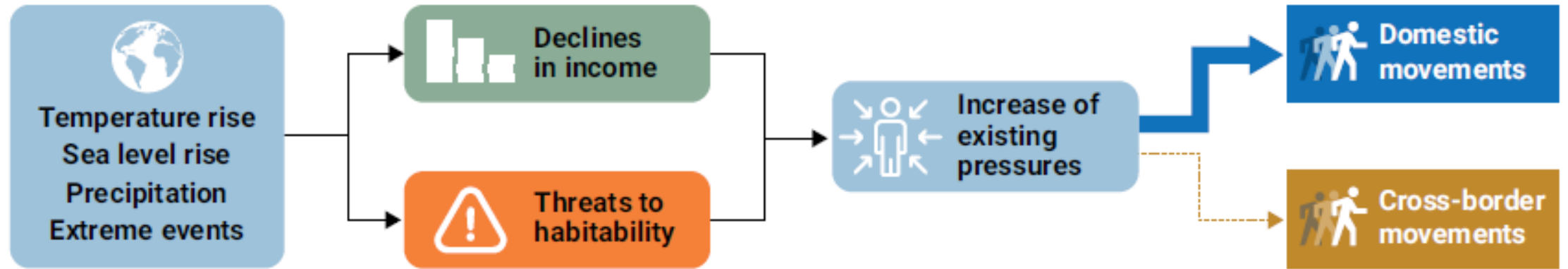
In **Mexico**, the demographic transition is well under way and is expected to accelerate



Nigeria will remain young well through the middle of the century

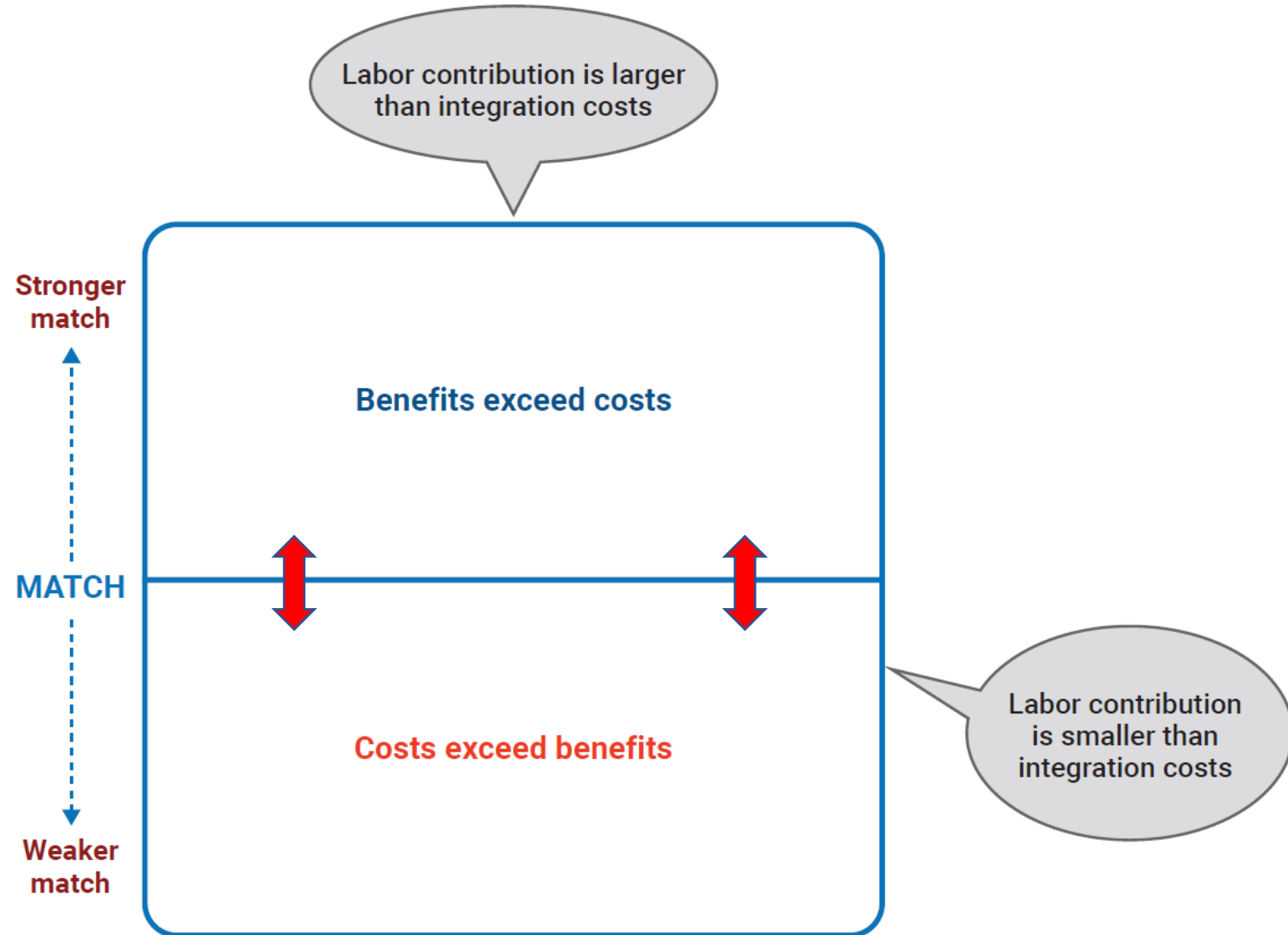


CLIMATE: RISKS AND THE NEED FOR URGENT ACTION

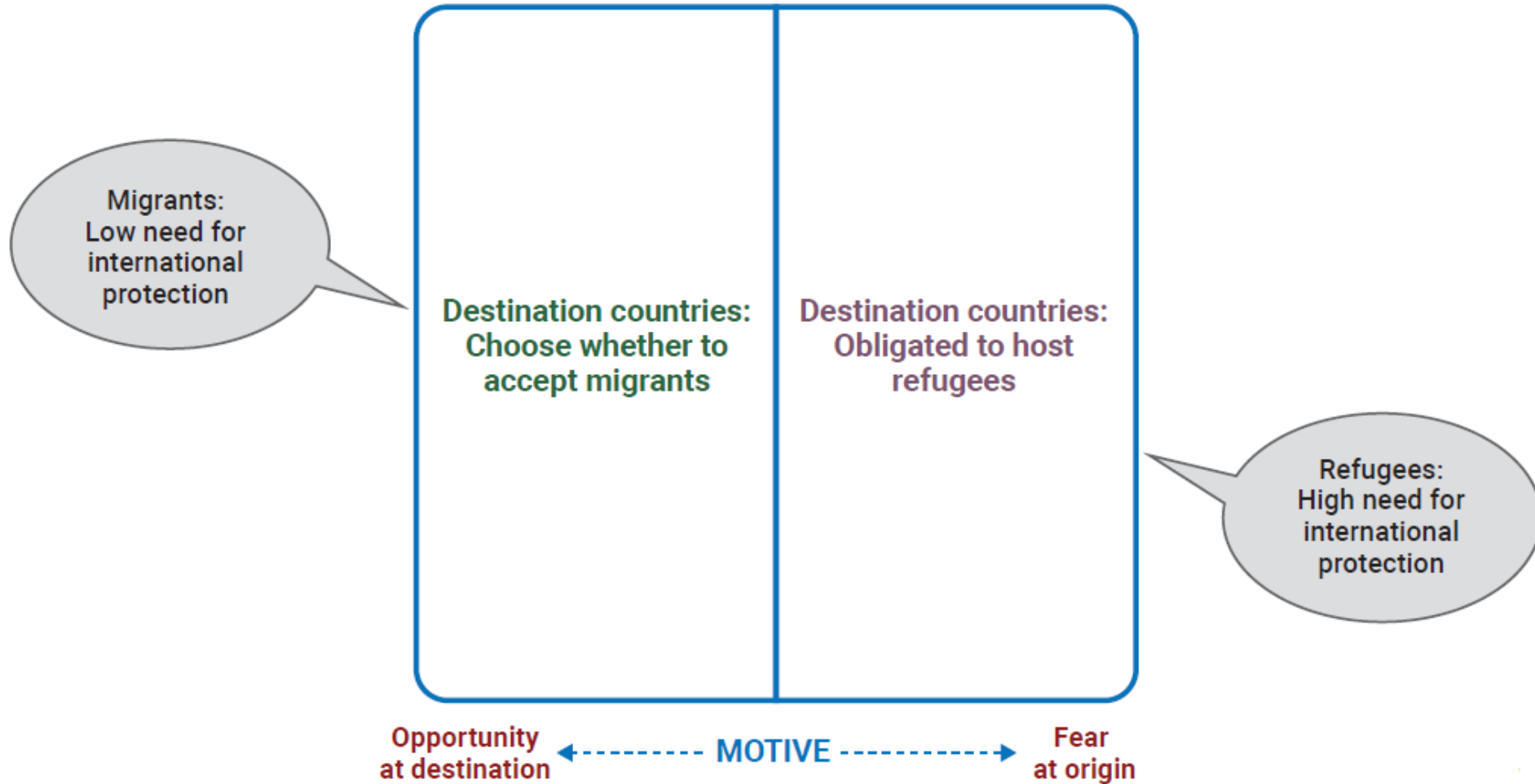


THE MATCH AND MOTIVE MATRIX

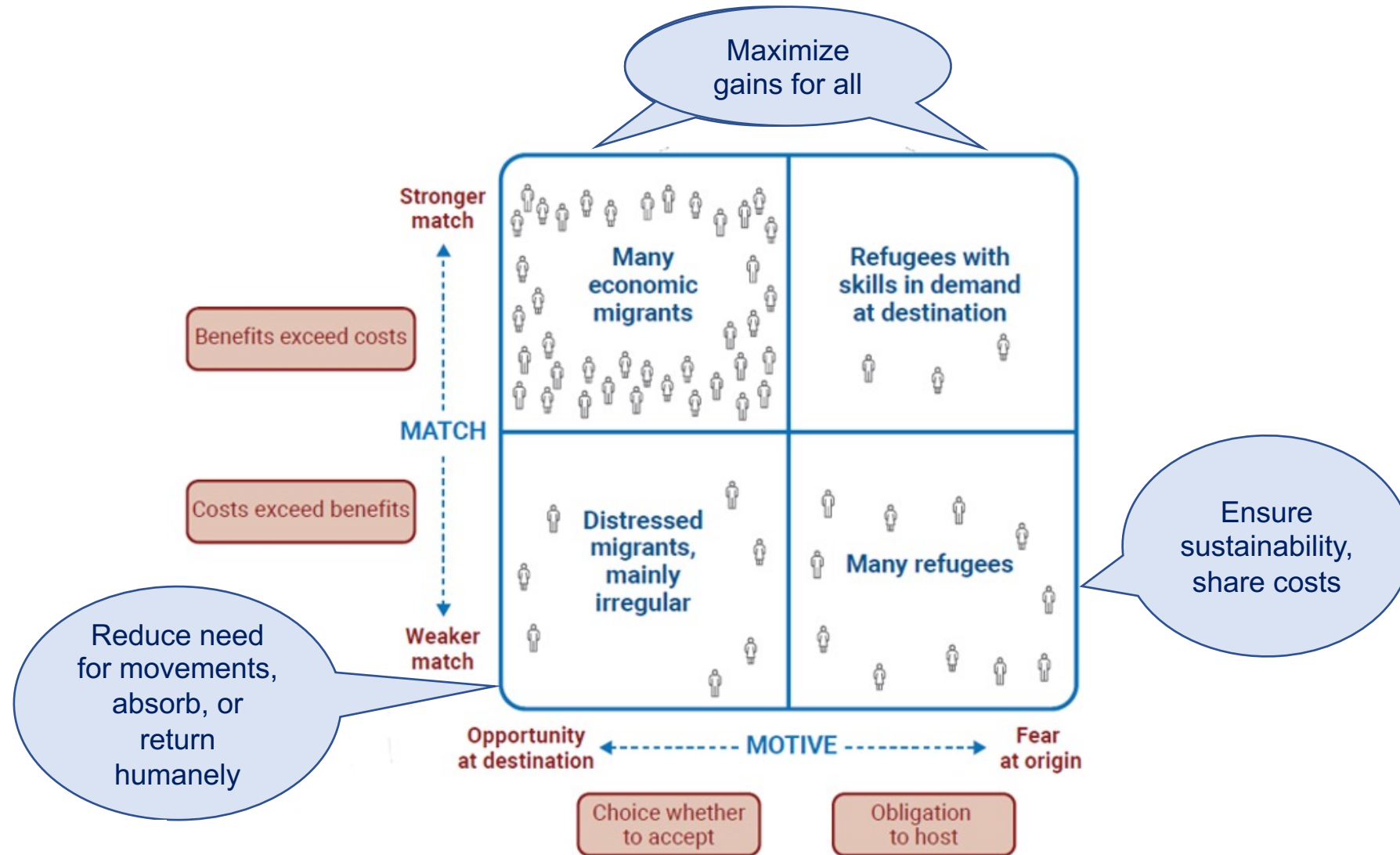
ECONOMICS: MIGRANTS' MATCH



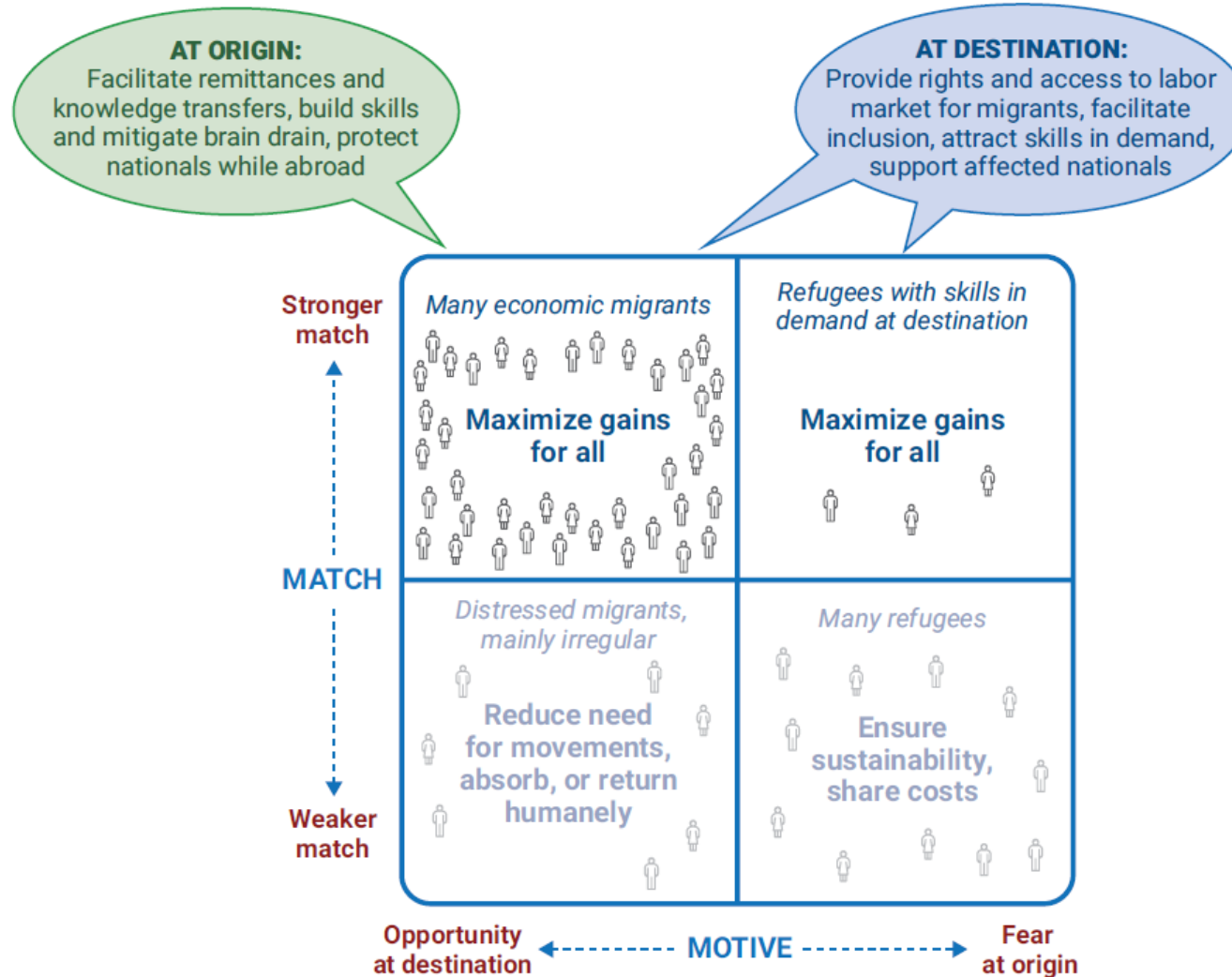
INTERNATIONAL LAW: MIGRANTS' MOTIVE



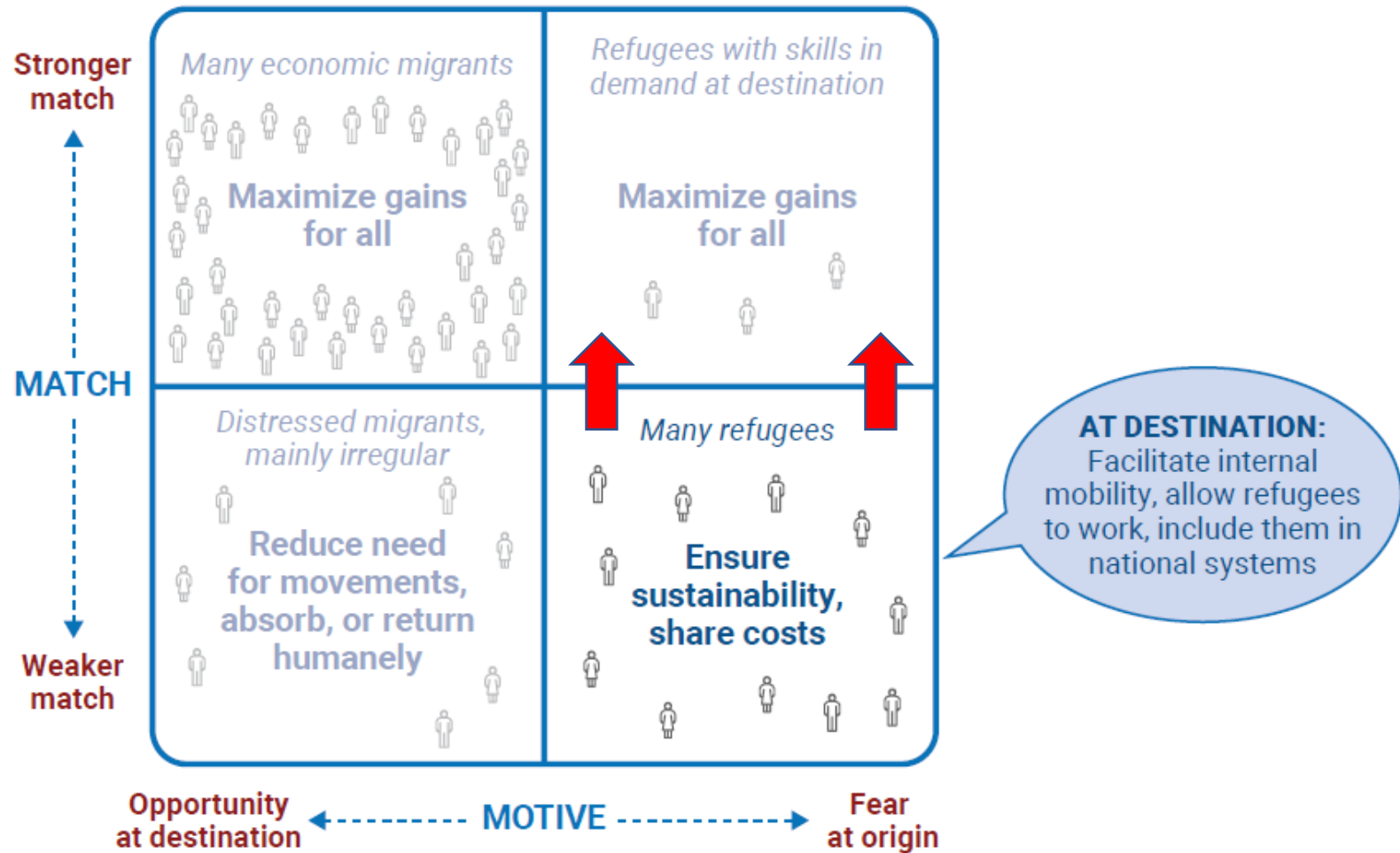
COMBINING MATCH AND MOTIVE



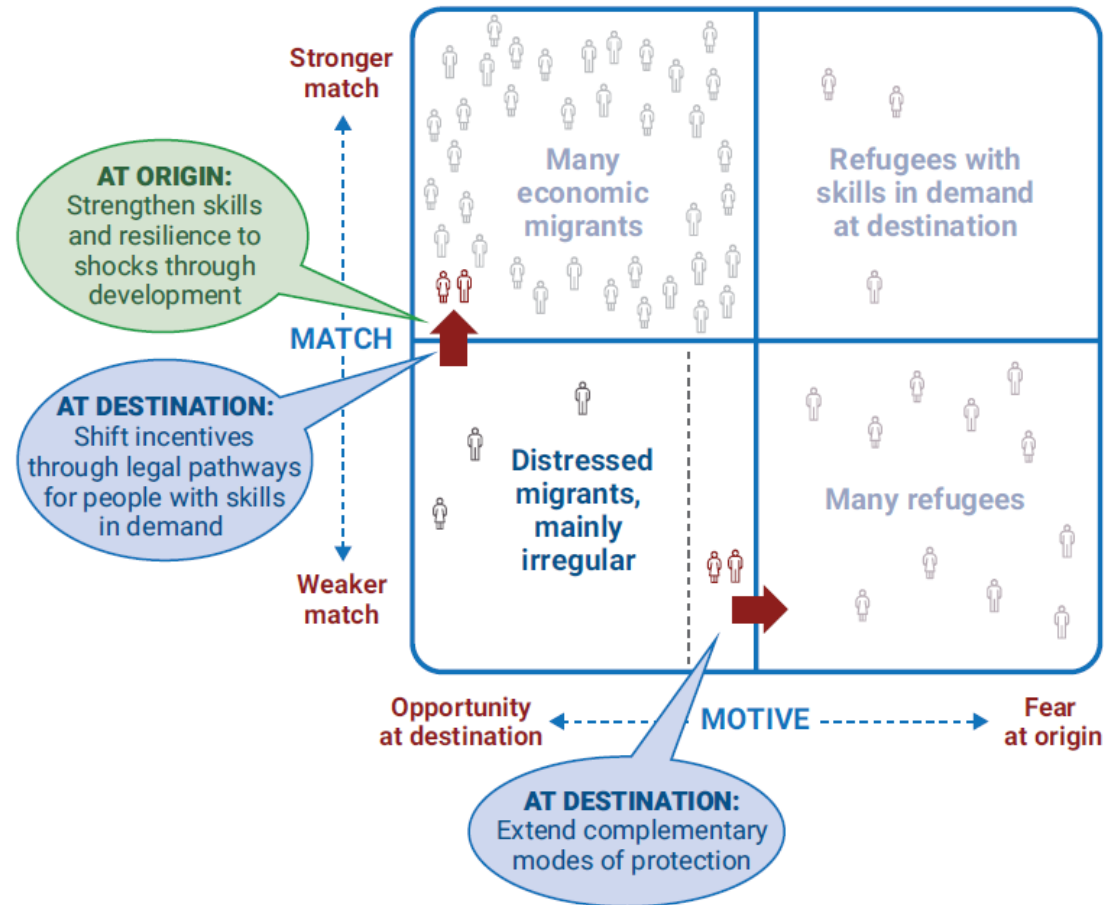
WHEN THE MATCH IS STRONG



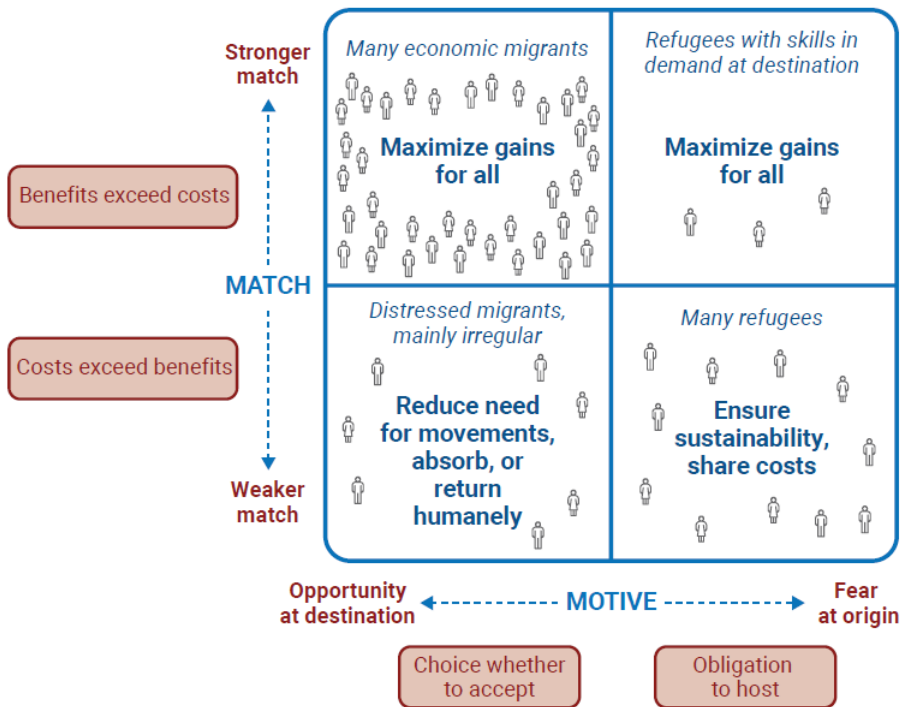
WHEN THE MATCH IS WEAKER BUT MIGRANTS ARE DRIVEN BY FEAR



WHEN THE MATCH IS WEAKER AND MIGRANTS ARE NOT DRIVEN BY FEAR



MAKING POLICY DIFFERENTLY



Working together

Bilateral cooperation:

- Bilateral labor agreements
- Global Skills Partnerships

Multilateral cooperation:

- Responsibility-sharing for refugees
- Norms setting

Financing instruments

- To support non-citizens
- To provide a medium-term perspective
- To incentivize cross-border cooperation

Inclusive decision-making

- Low- and middle-income countries
- Private sector, civil society, workers' organizations, local authorities, and other stakeholders
- Migrants and refugees

KEY MESSAGES



KEY MESSAGES

Migration is necessary for countries at all levels of income

When migrants' match is strong, the gains are large

- Destination countries should not let social and cultural controversies overshadow the economic gains from migration
- Most migrants benefit greatly from their move—and even more so when they have rights at destination
- Origin countries should actively manage migration for its development benefits

When migrants' match is weak, costs need to be shared—and reduced—multilaterally

- Refugee situations should be managed as medium-term development challenges, and not just as humanitarian emergencies
- Distressed migration needs to be reduced, while respecting people's dignity

Making migration work better requires doing things differently

- Stronger international cooperation is essential: bilateral to enhance migrants' match, multilateral to respond to movements driven by fear
- To make change happen, underrepresented voices must be heard, including developing countries'

DATA FOR EVIDENCE-BASED POLICY-MAKING

Data is necessary for understanding migration and policy levers for stronger match:

- Magnitude of migration and its determinants
- Impacts for migrants, origin and destination societies

Data is particularly scarce in low- and middle-income countries

- Migration is a rare phenomenon
- Limited applicability of findings in high-income country setting
- Comparability between data sources (administrative data, surveys, population censuses/registers,)

Data collection in fragile context presents increased challenges

- Accessibility/Safety concerns
- Exclusion of minorities and vulnerable populations (refugees, irregular migrants)

Looking ahead

- Harmonization
- Innovation
- Accessibility and privacy



www.worldbank.org/wdr2023

#wdr2023